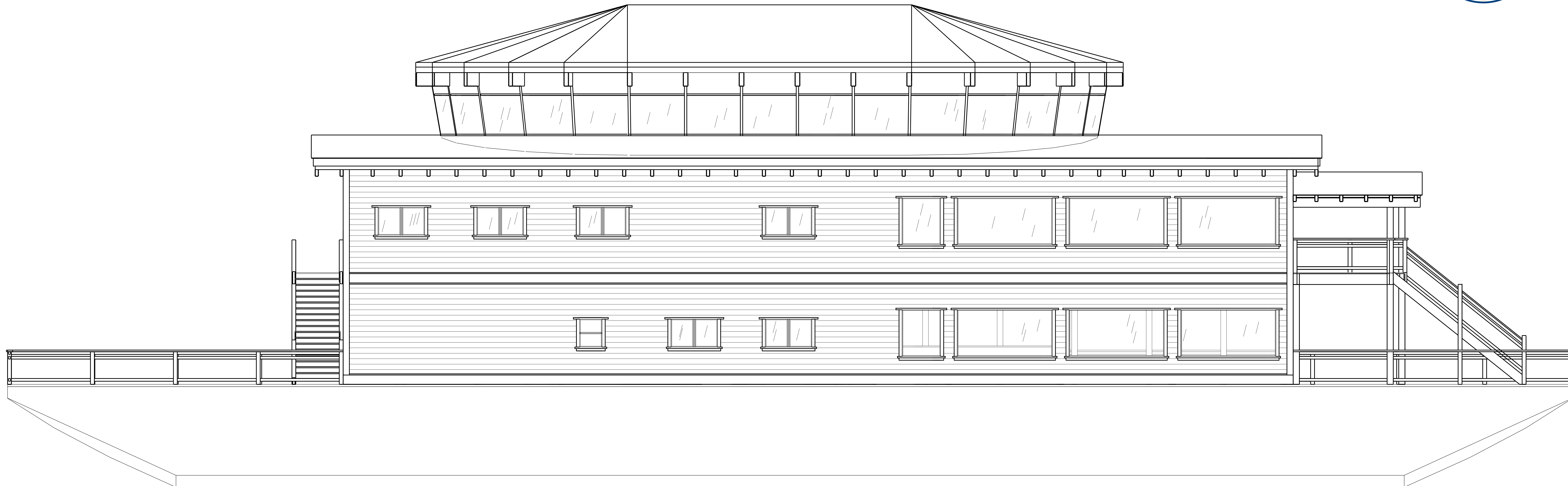
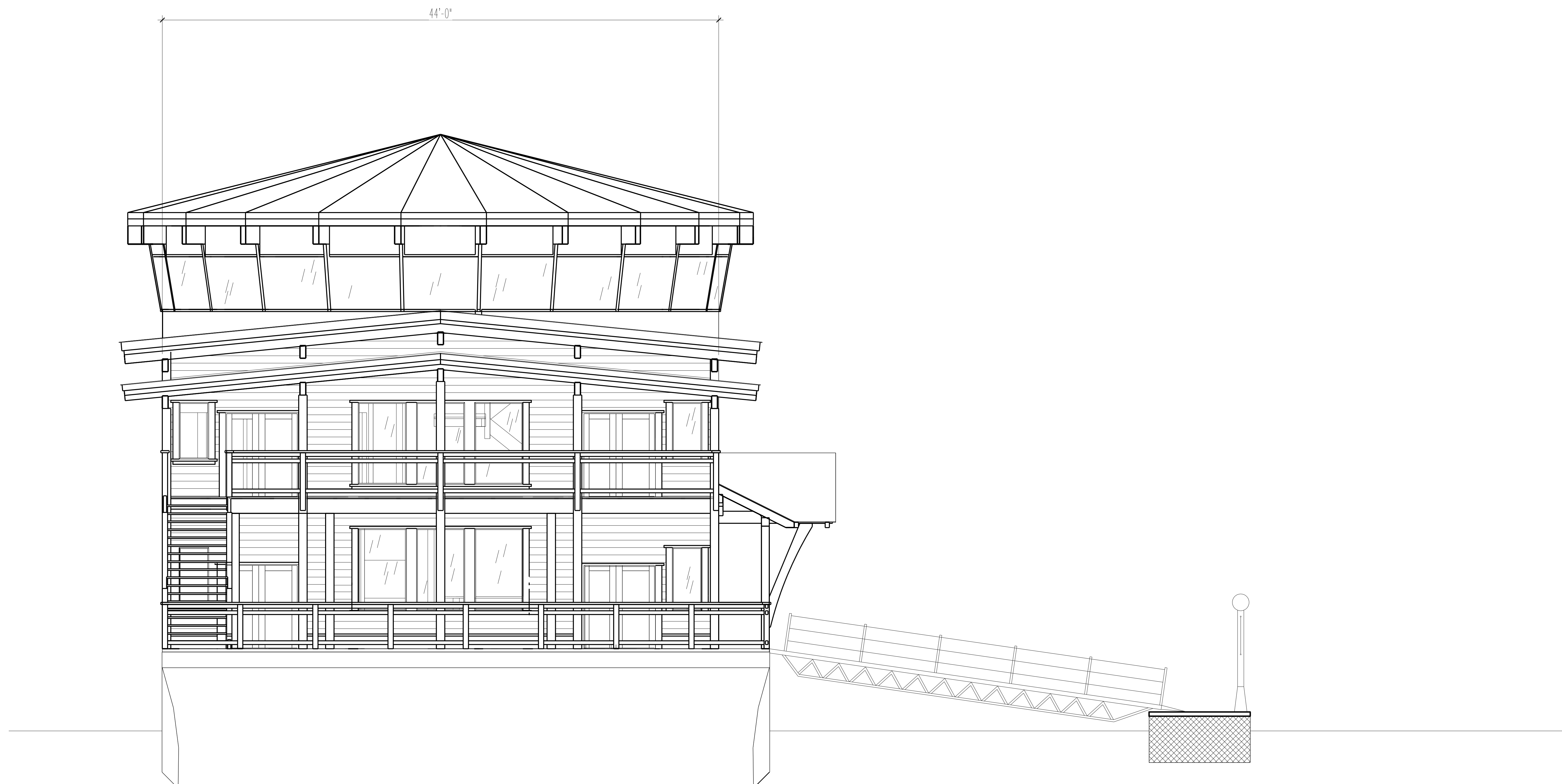


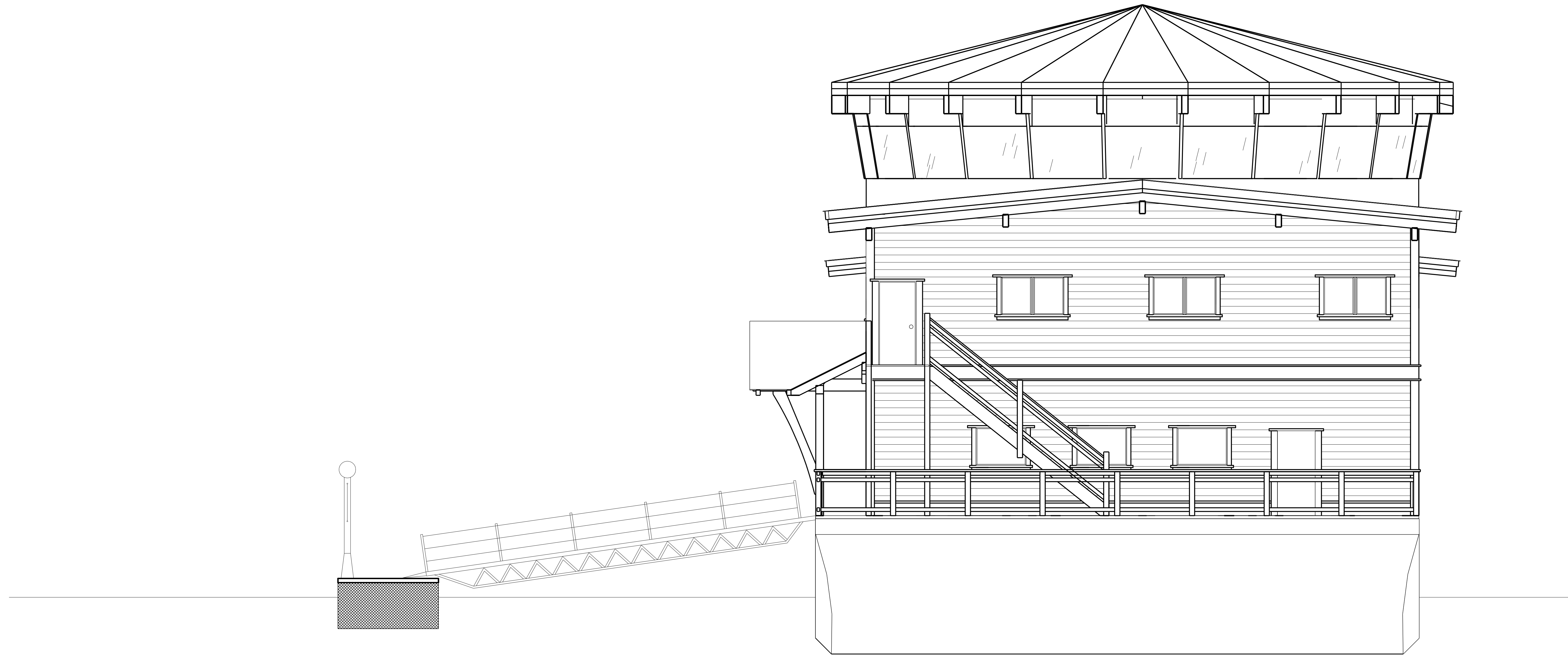
<p><b>COPYRIGHT</b></p> <p><small>This drawing is and remains the exclusive property of Island TimberFrame LTD. and cannot be reproduced or copied in any form or by any means (graphic, electronic or mechanical, including photocopying) without the written consent of Island TimberFrame LTD.</small></p> <p>© ITF 2006</p>	<b>Port Side</b>		<p><b>NLC</b></p> <p>Beside the Point</p>	<p><b>Island</b></p> <p><b>TIMBERFRAME ltd.</b></p> <p><small>Innovative Limber work &amp; design</small></p>	<p><small>3010 Royston Rd. Box 1390 Cumberland, B.C. V0R 1S0 Ph 250-336-2822 Fx 250-336-2821 islandtimberframe@shaw.ca www.islandtimberframe.com</small></p>
	Date: 23.04.06	Drawn: EG Gedgen			
	Rev:	Dwg. No.: <b>1</b>			



<p><b>COPYRIGHT</b></p> <p><small>This drawing is and remains the exclusive property of Island TimberFrame LTD. and cannot be reproduced or copied in any form or by any means (graphic, electronic or mechanical, including photocopying) without the written consent of Island TimberFrame LTD.</small></p> <p>© ITF 2006</p>	<b>Starboard Side</b>		<p><b>NLC</b></p> <p>Beside the Point</p>	<p><b>Island</b></p> <p><b>TIMBERFRAME ltd.</b></p> <p><i>Innovative timber work &amp; design</i></p>	<p>3010 Royston Rd. Box 1390 Cumberland, B.C. V0R 1S0 Ph 250-336-2822 Fx 250-336-2821 islandtimberframe@shaw.ca www.islandtimberframe.com</p>
	Date: 23.04.06	Drawn: EG Gardner			
	Rev:	Dwg. No.: <b>2</b>			



<p><b>COPYRIGHT</b></p> <p><small>This drawing is and remains the exclusive property of Island TimberFrame LTD. and cannot be reproduced or copied in any form or by any means (graphic, electronic or mechanical, including photocopying) without the written consent of Island TimberFrame LTD.</small></p> <p>© ITF 2006</p>	<b>Bow</b>		<p><b>NLC</b></p> <p>Beside the Point</p>	<p><b>Island</b></p> <p><b>TIMBERFRAME ltd.</b></p> <p><small>Innovative limber work &amp; design</small></p>	<p><small>3010 Royston Rd. Box 1390 Cumberland, B.C. V0R 1S0 Ph 250-336-2822 Fx 250-336-2821 islandtimberframe@shaw.ca www.islandtimberframe.com</small></p>
	Date: 23.04.06	Drawn: EG Gardner			
	Rev.:	Dwg. No.: <b>3</b>			



**COPYRIGHT**  
 This drawing is and remains the exclusive property of Island TimberFrame LTD. and cannot be reproduced or copied in any form or by any means: graphic, electronic or mechanical, including photocopying, without the written consent of Island TimberFrame LTD.  
 © ITF 2006

**Stern**  
 Date: 23.04.06  
 Drawn: EG  
 Gerdgen  
 Rev.:  
 Dwg. No.: 4

**NLC**  
 Beside the Point

**Island  
 TIMBERFRAME ltd.**  
 Innovative limber work & design

3010 Royston Rd. Box 1390  
 Cumberland, B.C. V0R 1S0  
 Ph 250-336-2822  
 Fx 250-336-2821  
 islandtimberframe@shaw.ca  
 www.islandtimberframe.com