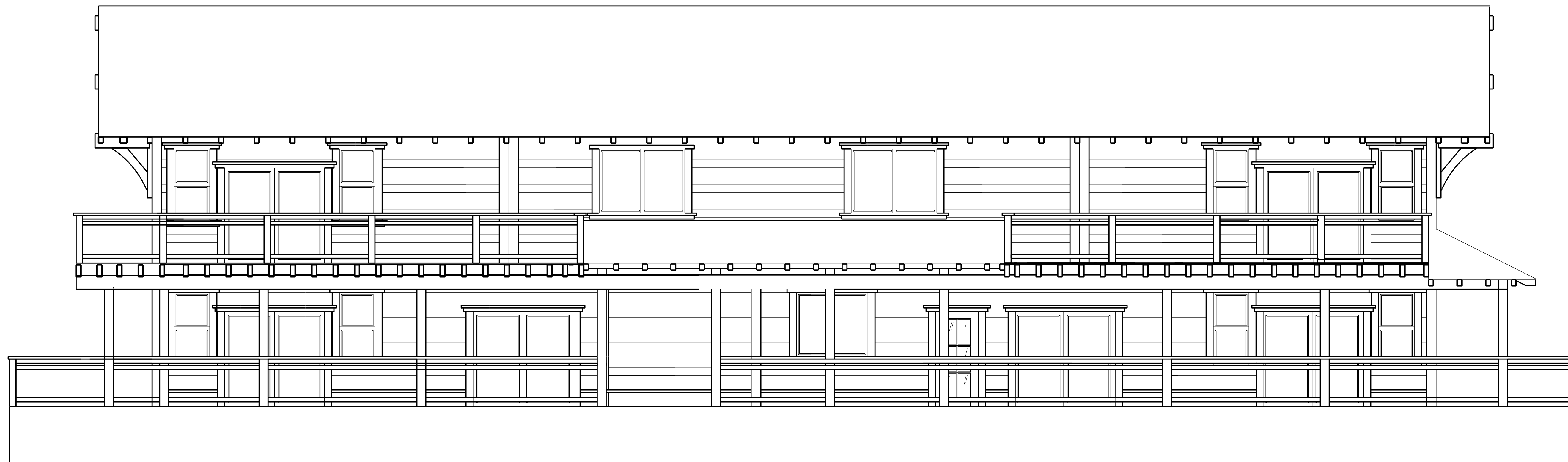
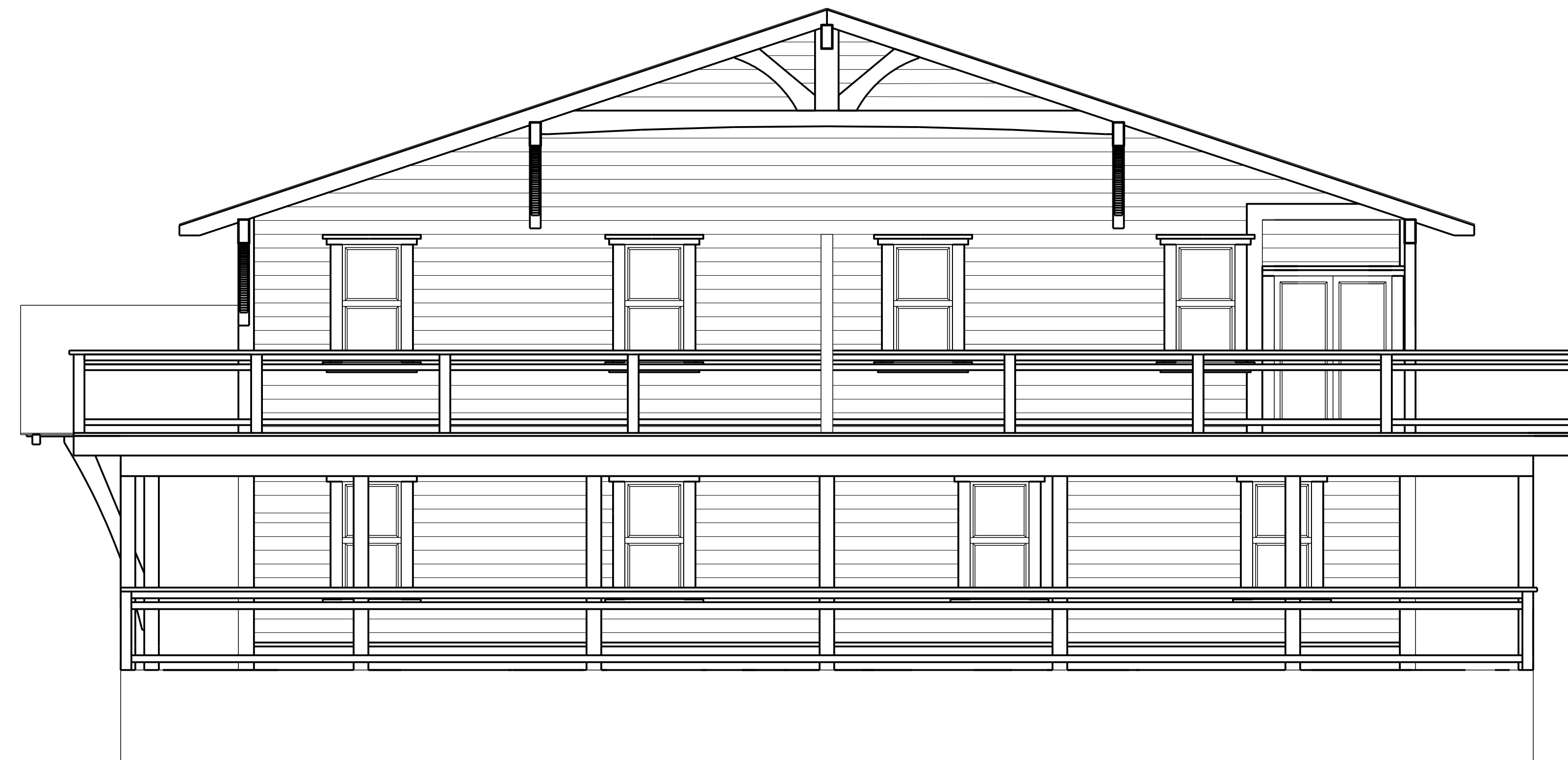


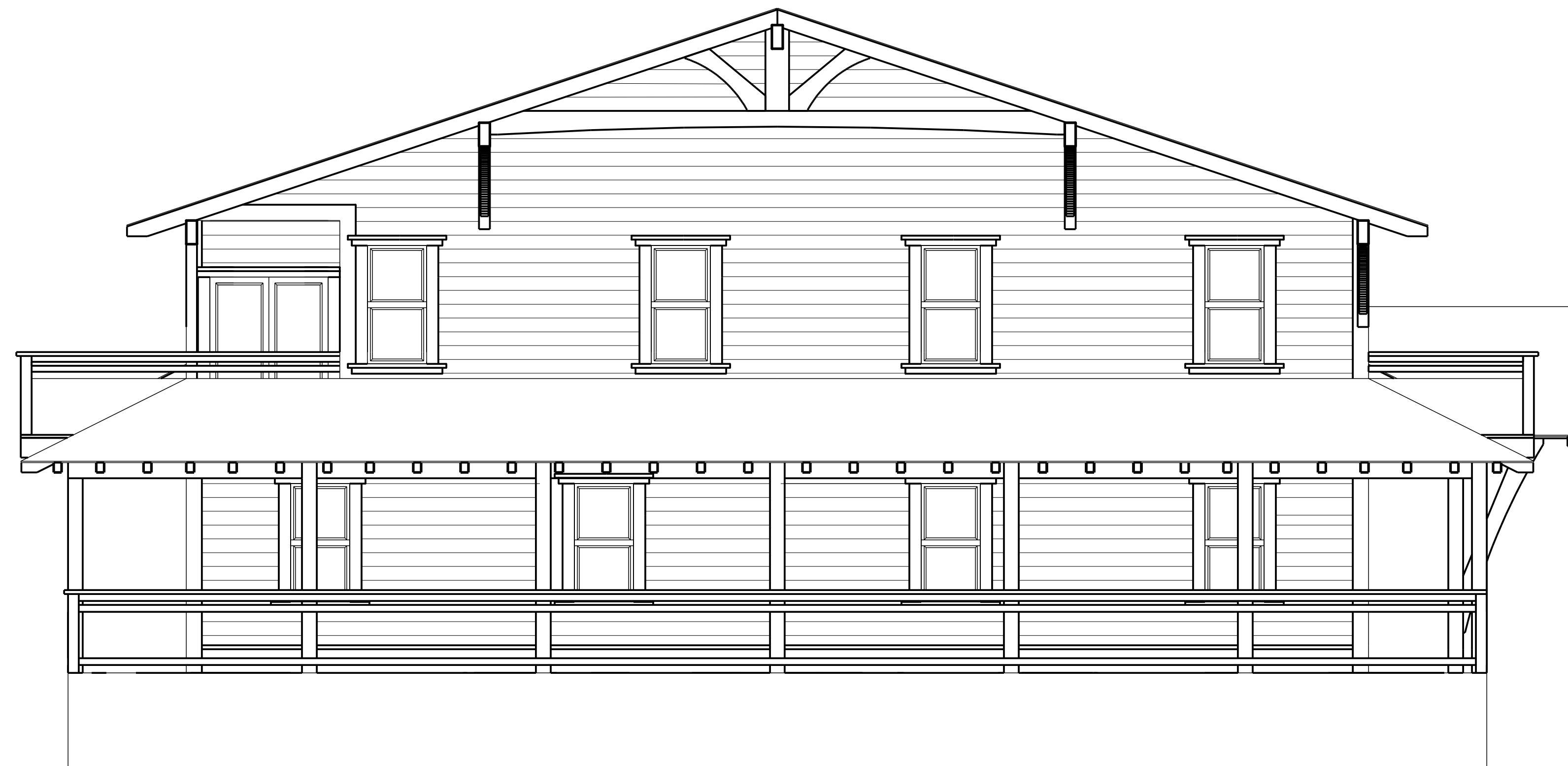
<p><b>COPYRIGHT</b></p> <p><small>This drawing is and remains the exclusive property of Island TimberFrame LTD. and cannot be reproduced or copied in any form or by any means (graphic, electronic or mechanical, including photocopying) without the written consent of Island TimberFrame LTD.</small></p> <p>© ITF 2006</p>	<p><b>Starboard</b></p>		<p><b>NLC</b> Resort Bdg #4 and #5</p>	<p><b>Island</b> <b>TIMBERFRAME ltd.</b> <i>Innovative limber work &amp; design</i></p>	<p>3010 Royston Rd. Box 1390 Cumberland, B.C. V0R 1S0 Ph 250-336-2822 Fx 250-336-2821</p>
	<p>Date: 06.06.06</p>	<p>Drawn: EJ Gardner</p>			<p>islandtimberframe@shaw.ca www.islandtimberframe.com</p>
	<p>Rev.:</p>	<p>Dwg. No.: <b>1</b></p>			



<p><b>COPYRIGHT</b></p> <p><small>This drawing is and remains the exclusive property of Island TimberFrame LTD. and cannot be reproduced or copied in any form or by any means (graphic, electronic or mechanical, including photocopying) without the written consent of Island TimberFrame LTD.</small></p> <p>© ITF 2006</p>	<p><b>Port</b></p>		<p><b>NLC</b> Resort Bdg #4 and #5</p>	<p><b>Island</b> <b>TIMBERFRAME ltd.</b> <i>Innovative limber work &amp; design</i></p>	<p>3010 Royston Rd. Box 1390 Cumberland, B.C. V0R 1S0 Ph 250-336-2822 Fx 250-336-2821</p>
	<p>Date: 06.06.06</p>	<p>Drawn: EJ Gardner</p>			<p>islandtimberframe@shaw.ca www.islandtimberframe.com</p>
	<p>Rev.:</p>	<p>Dwg. No.: <b>2</b></p>			



<p><b>COPYRIGHT</b></p> <p><small>This drawing is and remains the exclusive property of Island TimberFrame LTD. and cannot be reproduced or copied in any form or by any means (graphic, electronic or mechanical, including photocopying) without the written consent of Island TimberFrame LTD.</small></p> <p>© ITF 2006</p>	<p><b>Bow</b></p>		<p><b>NLC</b></p> <p>Resort Bdg #4 and #5</p>	<p><b>Island TIMBERFRAME ltd.</b></p> <p><i>Innovative timber work &amp; design</i></p>	<p>3010 Royston Rd. Box 1390 Cumberland, B.C. V0R 1S0 Ph 250-336-2822 Fx 250-336-2821 islandtimberframe@shaw.ca www.islandtimberframe.com</p>
	<p>Date: 06.06.06</p>	<p>Drawn: EJ Gardner</p>			



<p><b>COPYRIGHT</b></p> <p><small>This drawing is and remains the exclusive property of Island TimberFrame LTD. and cannot be reproduced or copied in any form or by any means (graphic, electronic or mechanical, including photocopying) without the written consent of Island TimberFrame LTD.</small></p> <p>© ITF 2006</p>	<p><b>Stern</b></p>		<p><b>NLC</b> Resort Bdg #4 and #5</p>	<p><b>Island TIMBERFRAME ltd.</b> <i>Innovative limber work &amp; design</i></p>	<p>3010 Royston Rd. Box 1390 Cumberland, B.C. V0R 1S0 Ph 250-336-2822 Fx 250-336-2821 islandtimberframe@shaw.ca www.islandtimberframe.com</p>
	<p>Date: 06.06.06</p>	<p>Drawn: EJ Gardner</p>			