



Survey Plan of District Lot 687,
Nootka District.

B.C.C.S. 926 078.



Legend

Bearings are NAD 83 grid bearings derived from the survey of D.L. 680. To obtain local astronomic bearings referred to the meridian through the South westerly corner of D.L. 680, add 1° 55' 50".

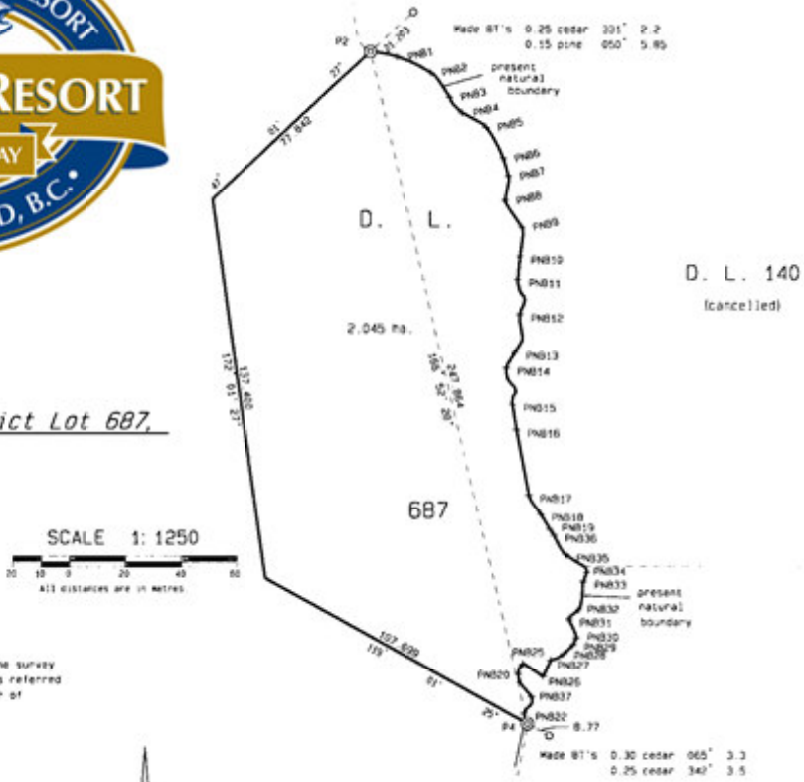
Bearings to bearing trees are magnetic.

- ⊙ denotes standard rock post found
- ⊙ denotes standard iron post found
- ⊙ denotes standard rock post set
- ⊙ denotes standard iron post set

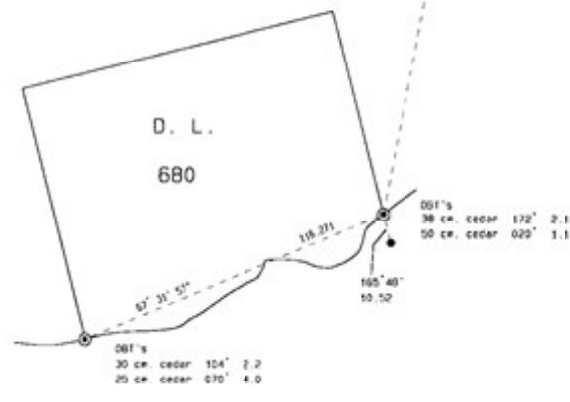
This plan shows horizontal ground level measured distances. Prior to computation of UTM co-ordinates, multiply by factor of 1.000009448.

Traverse of the present
natural boundary.

Sta. to Sta.	Bearing	Dist.
P0 to PNB1	100° 33' 45"	9.786
PNB1 to PNB2	115° 25' 55"	13.44
PNB2 to PNB3	142° 35' 15"	11.14
PNB3 to PNB4	141° 40' 05"	7.10
PNB4 to PNB5	121° 02' 33"	10.06
PNB5 to PNB6	151° 06' 02"	12.56
PNB6 to PNB7	163° 38' 03"	6.77
PNB7 to PNB8	180° 04' 19"	8.90
PNB8 to PNB9	148° 05' 59"	11.29
PNB9 to PNB10	183° 08' 19"	10.43
PNB10 to PNB11	165° 18' 53"	8.53
PNB11 to PNB12	176° 13' 42"	12.45
PNB12 to PNB13	187° 21' 42"	13.53
PNB13 to PNB14	200° 53' 06"	6.50
PNB14 to PNB15	170° 48' 11"	13.19
PNB15 to PNB16	170° 50' 40"	9.32
PNB16 to PNB17	169° 30' 45"	23.84
PNB17 to PNB18	148° 34' 52"	8.08
PNB18 to PNB19	149° 15' 28"	6.29
PNB19 to PNB20	146° 17' 07"	2.76
PNB20 to PNB30	148° 45' 13"	8.26
PNB30 to PNB34	129° 41' 02"	9.74
PNB34 to PNB33	199° 32' 20"	3.54
PNB33 to PNB32	185° 09' 14"	10.26
PNB32 to PNB31	224° 58' 24"	4.94
PNB31 to PNB30	158° 45' 02"	7.19
PNB30 to PNB29	202° 50' 03"	2.77
PNB29 to PNB28	225° 17' 29"	4.73
PNB28 to PNB27	243° 25' 59"	5.22
PNB27 to PNB26	205° 37' 40"	6.19
PNB26 to PNB25	300° 54' 07"	8.37
PNB25 to PNB24	295° 54' 42"	3.96
PNB24 to PNB23	152° 19' 27"	9.48
PNB23 to PNB22	203° 16' 04"	6.45
PNB22 to P4	162° 22' 12"	3.53



Galiano
Bay



I, William B. Hutchinson, a British Columbia Land Surveyor, of Nanaimo, in British Columbia, certify that I was present at and personally superintended the survey represented by this plan, and that the survey and plan are correct.
The final survey was completed on the 23rd day of March, 2006. The plan was completed and checked, and the checklist filed under ECP-46014 on the 23rd day of March, 2006.

SIGNATURE OF B.C.C.S.

OFFICIAL PLAN
COMPLETED UNDER SECTION 72
LAND ACT

Surveyor General
Victoria, B.C.

W. B. HUTCHINSON
Land Surveying Ltd.
512 Wentworth St.,
Nanaimo, B.C.
VSR 3E4
53-2921

File No: 687-1

This plan lies within the Coos-Straithcove Regional District.